

# VsionAir Lighting, Camera & Vertical Tool Bar Rig

## Packing List & Assembly Instructions for 1m, 1.2m & 1.5m Versions

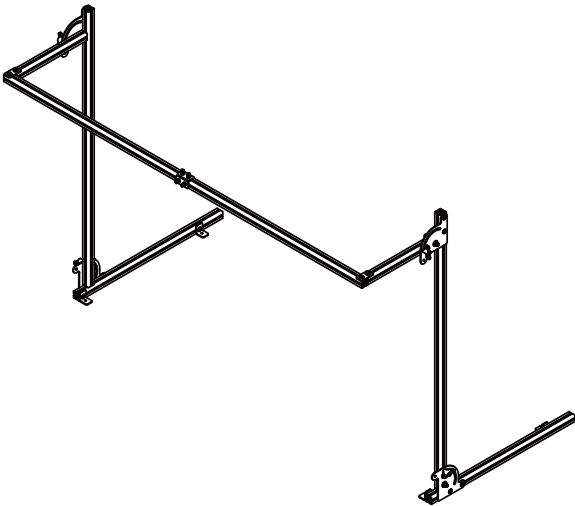
Tools Required:

10mm Spanner or Socket Wrench  
Cross head screwdriver



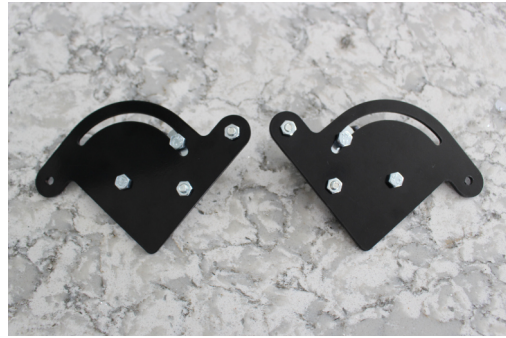
Part Description	Qty used in 1m version	Qty used in 1.2m version	Qty used in 1.5m version
<b>Main VFrame</b>			
300mm VFrame	2	2	2
600mm VFrame	2	4	-
750mm VFrame	-	-	2
1000mm VFrame	3	2	2
<b>Angle Adjuster Parts</b>			
Angle Brackets	4	4	4
Flange Screws m6 x 10mm + m6 half nuts	8	8	8
Bolts m6 x 16mm	8	8	8
Washers M6	8	8	8
Locking Knobs	4	4	4
<b>VFrame Joining Brackets</b>			
VFrame End Stop Brackets	2	4	5
Bolt 26 x 16mm with m6 Nylon Locknut	4	8	10
<b>90 degree bracket for Vframe to desk</b>	2	2	2

90 degree bracket with 1 flange screw m6 x 10mm & half nut	2	2	2
<b>90 degree bracket for Vframe to horizontal tool bar</b>			
90 degree Vframe bracket with 2 flange screws m6 x 10mm with half nuts	2	2	2



The finished item should look like the diagram opposite.

1). Assemble angle adjuster parts as image shown below remember that they are mirrored.



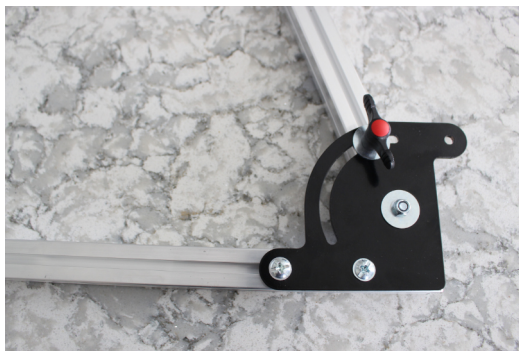
2). Slide the 600mm VFrame onto the flange screwed nuts and tighten. See diagram below, again remember there are 2 and that they are mirrored.





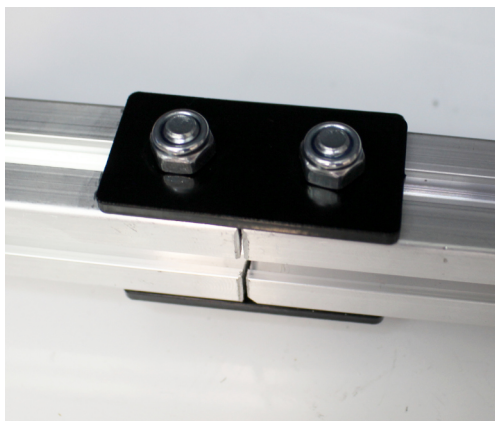
3). Slide the 1000mm VFrame onto bolt heads on locking knob and nylon locking nut bolt head. as image overleaf, again remember there are 2 and that they are mirrored. Once in position tighten the nylon lock nut up tight, then loosen ever so slightly so to allow the angle bracket to be adjusted. Tighten the locking knob.

4). Slide the angle adjuster bracket onto the 1000mm V Frame tighten the flange screws then slide



the 300mm V Frame “outrigger onto the bolt heads on locking knob and nylon locking nut bolt head as images below, again remember there are 2 and that they are mirrored.

5). If you are assembling the 1.2m or 1.5m please follow these steps.



Take the 2 x 600mm or 750mm V Frame and connect them together using the End Stop Brackets, bolts and nylon lock nuts. 2 brackets for 1.2m and 3 brackets for there 1.5m. see image below.



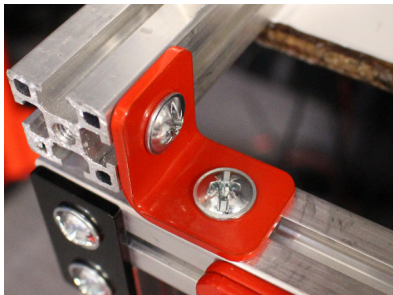
6). Next you can connect both side together by using the top main lighting rig bar. See image below, again remember there are 2 and that they are mirrored.

7). the final pieces of the assembly are to add the 90 degree brackets.

1 set needs to used for mounting the entire rig to the desk, these have only 1 flange screw and half nut as in image below, again remember there are 2 and that they are mirrored.



Whilst the other one is screwed to both the lighting, camera & tool bar base V Frame and the tool bar that is connected to the desk mount stand, see image below, again remember there are 2 and that they are mirrored.



You should be fully assembled and ready to add your accessories.

If you would like to follow a video as well please scan this QR code and it will take you directly to YouTube.

For more information, please visit [www.visionair.com](http://www.visionair.com) to see the latest jigs and accessories.

Once again thank you for supporting Flake King and our trusted dealers.